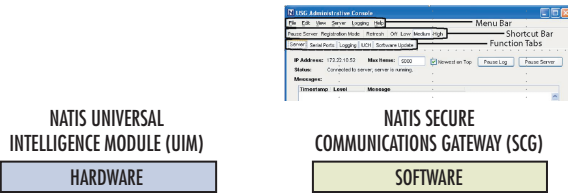




## SECURE DISTRIBUTION AUTOMATION PLATFORM

*The Natis Secure Distribution Automation Platform provides secure communications to remote equipment*



### Natis Secure Distribution Automation Platform

The Natis Secure Distribution Automation Platform (SDAP) provides secure, scalable, reliable communications between the remote devices in distribution feeders and SCADA applications servers. This is combined with the provision of intelligent computer processing power at the devices where local device-related applications run.

The platform enables the automation of the many different types of equipment found in distribution feeders and it can operate with multiple communications networks in the same feeder environment. A full implementation of SDAP can seamlessly integrate legacy and new equipment into one easy-to-manage distribution feeder.

Unlike other communications solutions, the Natis Secure Distribution Automation Platform utilizes a standard TCP/IP infrastructure. Because of this, the Natis SDAP can be used with a variety of communication providers and technologies; wired and wireless. Where available, wired networks including dial-up, DSL and Cable networks can provide convenient communications options. The growth of Wi-Fi and WiMax coverage in metropolitan areas offers an attractive alternative to wired connections. The cellular data network and IP-radio coverage can provide cost effective communications to virtually any geographical area. Satellite communications or 900 MHz alternatives are available for the truly remote locations.

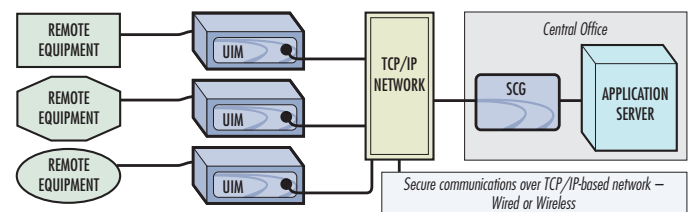
The use of TCP/IP based communications can eliminate the need for a utility to build and maintain additional private communications infrastructure for either implementation or expansion.

***The most cost-effective, secure, reliable remote communications solutions.***

The Natis Secure Communications Platform consists of two components: the Natis Universal Intelligence Module and the Natis Secure Communications Gateway.

The Natis Universal Intelligence Module (UIM) is the remote end of the communications platform that is connected to the remote equipment. Once connected, the UIM facilitates data connectivity between the remote equipment and the Secure Communications Gateway. The UIM is modular in nature, and can accept a combination of communications modules from several different networks, including cellular, satellite, and fiber. More than just a fixed function device, the UIM has a full processor plus additional memory, storage, and local communication ports which enables additional functionality. Applications can be developed to allow for remote equipment configuration, protocol conversion, additional data capture options, and many other capabilities.

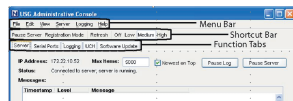
The Natis Secure Communications Gateway (SCG) software is installed at the operation center. The SCG serves three primary roles: it manages the both the access security and encryption, it manages communications between the application server and the UIM, and it provides the local access to additional features and applications added to the UIM.





## SECURE DISTRIBUTION AUTOMATION PLATFORM

*The Natis Secure Distribution Automation Platform provides expandability for future needs and requirements*



### Natis Secure Distribution Automation Platform

The SDAP is a comprehensive platform with the flexibility to support additional functions and custom applications tailored to specific needs. By leveraging the platform, it is very simple to create new vertical applications and solutions that layer on top of the SDAP. Two examples of vertical applications include the Natis SCADA Communications Solution and the Natis Universal Switch Control.

The flexibility of the SDAP is evident with the introduction of the Natis Universal Switch Control (USC). The USC incorporates a Natis UIM into a submersible form factor enabling secure, remote monitoring, remote operations and remote configuration with equipment located in underground vaults.

## SDAP SECURE DISTRIBUTION AUTOMATION PLATFORM

### Features and Benefits

- End to end encrypted secure communication
- Reliably supports multiple applications
- Dual network coverage for back up
- Two-way communications
- Packet based IP communication protocols
- Plug and play capability
- Leverages proven communication networks
- Scalable communication signal aggregation
- Turn-key cellular and satellite data offerings
- Full compliance with cyber-security rules
- Efficient, easy to maintain operating profile
- Affords redundancy in most environments
- Full utilization of edge device capabilities
- Easy configuration and integration
- Flexible communication choice

Natis Communications Corp.  
18440 TECHNOLOGY DRIVE, SUITE 140  
MORGAN HILL CA 95037-2881 USA  
[www.natiscommunications.com](http://www.natiscommunications.com)

OFFICE +1.408.779.5500  
FAX +1.408.779.5700  
[info@natiscommunications.com](mailto:info@natiscommunications.com)