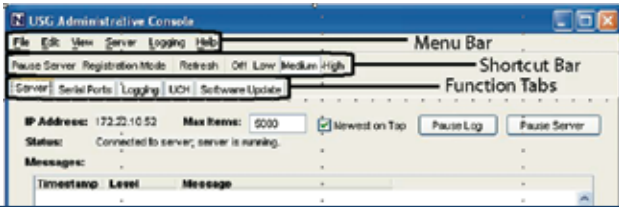


The Natis Secure Communications Gateway provides secure communications to remote equipment



SCG SECURE COMMUNICATIONS GATEWAY

Features and Benefits

- Server based application
- Scales to more than 5,000 devices
- UI for remote UCH administration
- Message routing and concentrator
- Dual communication network capability
- Supports well-known protocols
- Multiple serial interfaces
- API for integration with applications
- Optional reports and features

Applications

- Electric, gas and wastewater
- Transportation and public safety
- Oil and gas distribution
- Industrial and process control
- Government and homeland security

The Natis Secure Communication Gateway (SCG) is a server-based software application which acts as a message router and concentrator to ensure that messages from application servers are delivered to their intended devices and the responses are routed back to the application server.

Flexible and Extensible

The SCG can be hosted anywhere on the corporate network, typically in the central office or operations center. The SCG interfaces to the applications server and can accommodate multiple serial ports or LAN-based access making it virtually transparent to your existing software system.

Connection to the corporate LAN/WAN through a firewall is supported as well as direct connections to the Internet (DSL, cable) and dedicated connections to a cellular or other service providers' internal networks.

Simple Configuration

The Secure Communication Gateway features a user interface to perform initial registration of Natis appliances such as the UCH and USC, remote administration and a variety of reports and maintenance functions. Optional reports and features such as cellular airtime usage monitor and other customer-specific upgrades are available.

Reliable and Secure

A database system stores Natis appliance configuration information and communications statistics. The SCG has a modular database interface which allows connection to most enterprise database systems including those provided as part of most Windows® operating systems. The Secure Communication Gateway is written entirely in JAVA and is available on Windows and most other server platforms.

***The most cost-effective, secure, reliable
remote communications solutions.***

SCG SECURE COMMUNICATIONS GATEWAY

SYSTEM REQUIREMENTS

Features and Benefits

- Pentium III – 600 Mhz or better
- Windows XP or later
- Microsoft SQL Server
- 256 Mbytes RAM
- 20 GByte Free Hard Disk Space
- Uninterruptible Power Supply
- Standard RS-232 serial port
(Optional: multi-port serial boards or dedicated LAN connection to SCADA server)
- LAN/WAN TCP/IP connection
(Optional: DSL modem or cable modem for dedicated TCP/IP connection to provider)

Security

- **RSA** Key Exchange
- **3-DES** encryption
- **AES** encryption

Natis Communications Corp.
10255 LUCKY COURT
GILROY CA 95020-9466 USA
www.natiscommunications.com

OFFICE +1.408.842.1151
FAX +1.408.842.3931
info@natiscommunications.com